

Single Shot Drencher



The Phillips 150 ml Single Shot Drencher has been designed for oral administration to cattle of most SUSPENSIONS or SOLUTIONS within its dose range.

As components in this instrument may be affected by solvents in some “pour-on” formulations no responsibility will be accepted by the manufacturer should the instrument be used with such products.

INSTRUCTIONS FOR USE

1. Lubricate the piston - see details for care and maintenance.
2. Set the dose by turning the knurled dose adjuster at rear of handle.
 - a. Turn the dose adjuster anti-clockwise to increase dose, clockwise to decrease.
 - b. Continue to turn dose adjuster until front edge of piston washer coincides with required dose graduation on cylinder.
 - c. To be sure of complete accuracy the dose should be checked with a properly calibrated measuring glass.
3. Position the nozzle as desired and lock knurled nozzle nut.
4. Immerse the nozzle into the container of drench, and squeeze lever several times to prime.
5. Check dose accuracy.

CARE & MAINTENANCE BEFORE DRENCHING

- As lubricants will evaporate during storage, before using it is important to run a few drops of NJ Phillips Lubricant into the air hole of the adaptor, with the nozzle of the handpiece pointing downward. This will allow the NJ Phillips Lubricant to run into the cylinder and lubricate the piston.
- Ensure the handpiece is thoroughly clean before use, by flushing with water.
- Before each use, the nozzle should be inspected to ensure plating is not damaged or worn to a sharp edge. Should this occur, remove with file or emery paper or replace nozzle.

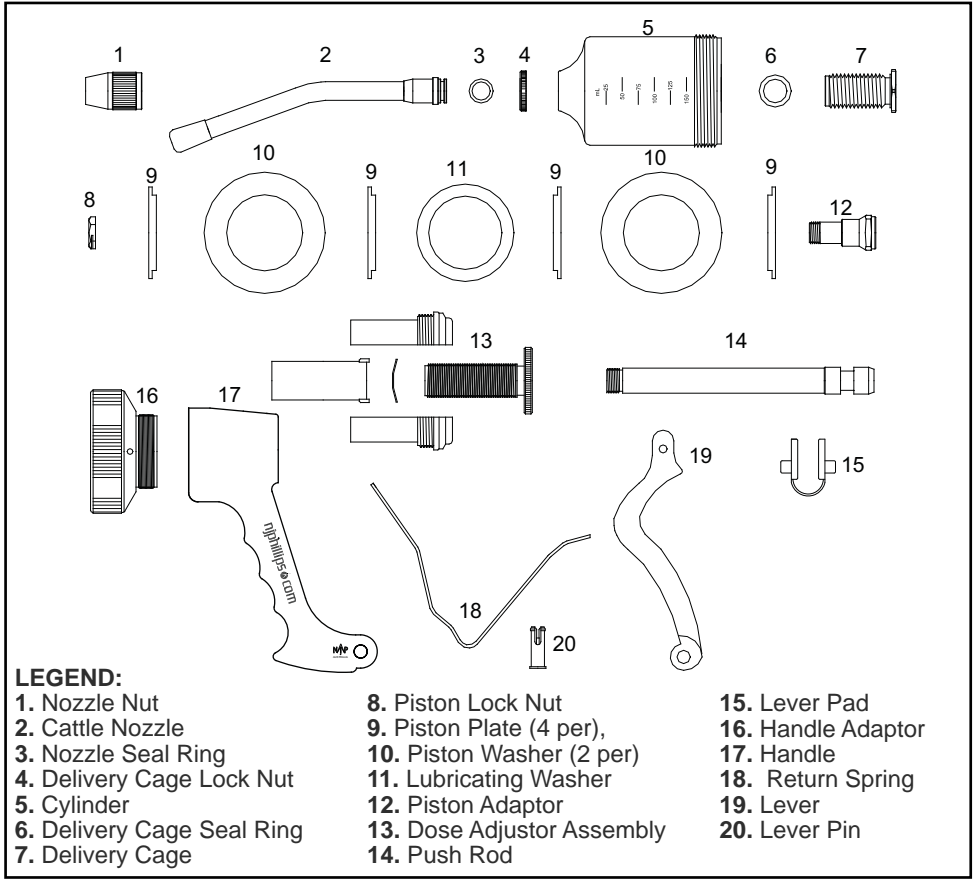


Always exercise care when dosing animals. Do not apply undue pressure and ensure the nozzle is not forced against or through delicate mouth and throat tissues.

- After drenching flush the handpiece with a warm water detergent mix. This should be followed by clean water.
- All moving parts should be lubricated before storage.



The cylinder of this instrument is removed by unscrewing. Should the cylinder be removed, care must be taken when replacing to ensure the lip of the front piston washer is not turned back which will cause the instrument to fail.



LEGEND:

- | | | |
|----------------------------|----------------------------|--------------------|
| 1. Nozzle Nut | 8. Piston Lock Nut | 15. Lever Pad |
| 2. Cattle Nozzle | 9. Piston Plate (4 per), | 16. Handle Adaptor |
| 3. Nozzle Seal Ring | 10. Piston Washer (2 per) | 17. Handle |
| 4. Delivery Cage Lock Nut | 11. Lubricating Washer | 18. Return Spring |
| 5. Cylinder | 12. Piston Adaptor | 19. Lever |
| 6. Delivery Cage Seal Ring | 13. Dose Adjustor Assembly | 20. Lever Pin |
| 7. Delivery Cage | 14. Push Rod | |

PLEASE ORDER BY KIT AND PART NAME.

SPARE PARTS AVAILABLE:

| <u>KIT No.</u> | <u>PART NAME</u> | <u>INCLUDES ILLUSTRATION No.</u> |
|----------------|-------------------|----------------------------------|
| WX1074 | Minor Service Kit | 3,6,8,10,11,15. |
| WX1077 | Major Service Kit | 3,5,6,8,9,10,11,18. |

If this instrument becomes sluggish during use, lubricate both in front of and behind the piston.

NJ PHILLIPS PTY LTD ABN 36 000 082 002
ADDRESS: LOCKED BAG 8, GOSFORD, NSW 2250 AUSTRALIA
TELEPHONE: +61 2 4340 2044 **FAX:** +61 2 4340 1991
EMAIL: njp1@njphillips.com.au **MADE IN AUSTRALIA**



njphillips.com
Our expertise is in your hands.

AS OUR POLICY IS ONE OF CONTINUOUS IMPROVEMENT THE MANUFACTURER RESERVES THE RIGHT TO ALTER THESE SPECIFICATIONS AT ANY TIME. ALL PRODUCTS PRODUCED BY NJ PHILLIPS PTY LIMITED, ARE IDENTIFIED BY A UNIQUE BATCH NUMBER. THIS IDENTIFICATION NUMBER IS AFFIXED TO THE PRODUCT TO ALLOW TRACEABILITY BY THE MANUFACTURER AND MUST NOT BE REMOVED IF PRODUCT INTEGRITY IS TO BE MAINTAINED.
PNA506 | QL196-R7