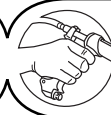


12.5ml Variable

Banana Applicator



njphillips.com

Our expertise is in your hands.



This instrument is designed for the administration of larger volume injectable solutions to banana trees.

No liability will be accepted by the manufacturer if used for any other purpose.

To ensure continued high performance from this instrument, attention to cleanliness is essential.

INSTRUCTIONS FOR USE

1. Check that handpiece is clean and operates freely by depressing lever (item 19) a number of times. If operation sluggish, clean and lubricate.
2. Connect feed tube to both the handpiece at (item 13) and draw-off system.
3. To prime instrument, **holding vertically with the nozzle pointed upwards** depress the lever until all air bubbles have been eliminated from the cylinder and a droplet of solution appears at the end of the spear nozzle.



Due to the unique 'cross holes' design in the nozzle, care must be taken to ensure the liquid does not come into contact with any part of the operators body. Chemicals may cause injury to the operator.

4. **To set required dose:**
 - a. Turn dose adjustor (Item 16) clockwise to decrease dose, anticlockwise to increase dose.
 - b. Continue to turn dose adjustor until front edge of piston (item 13) coincides with required dose graduation on cylinder.
 - c. To be sure of complete accuracy, the dose should be checked with a calibrated glass measuring cylinder.
 - d. Dose levels should be set in accordance with horticultural manufacturers administration instructions.

CARE AND MAINTENANCE OF INSTRUMENT

1. CLEANING INSTRUMENT

- a. Disconnect feed tube from draw-off system and place the end of the feed tube in a clean container with a mix of approximately one litre of warm water and a little detergent.
- b. Set dose on maximum and draw solution through handpiece by depressing lever (Item 19) a number of times until clean.



Due to the unique 'cross holes' design in the nozzle, care must be taken to ensure the liquid does not come into contact with the facial area.

- c. Hand wash exterior of instrument, feed tube and draw-off connector with soft brush.
- d. Rinse by pumping clean water through instrument.
- e. Pump dry, remove feed tube from instrument and wipe dry.



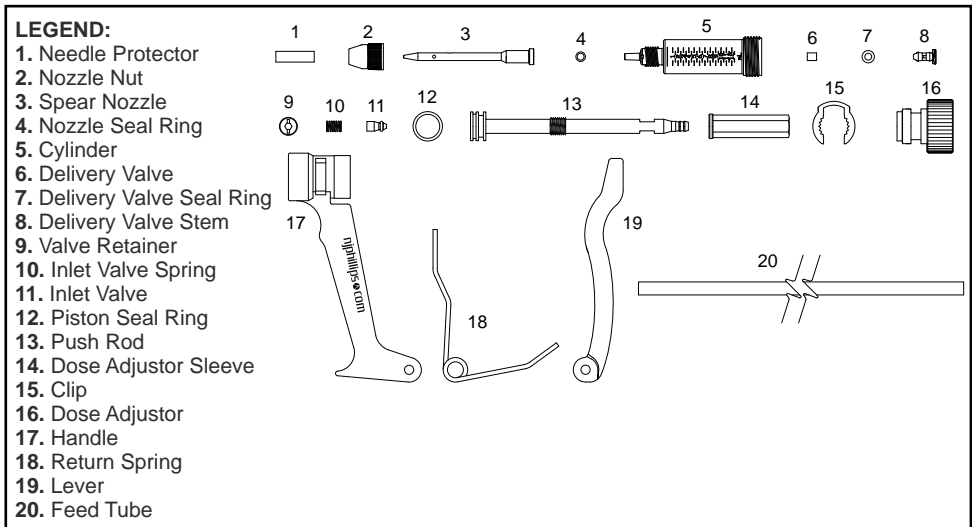
DO NOT store your applicator or feed tube full of product. Clean as per the "Care and Maintenance of Instrument" instructions.

2. LUBRICATING INSTRUMENT

- a. Immerse tapered end of push rod (Item 13) into a small container of NJ Phillips lubricant.
- b. Draw a small quantity of NJ Phillips lubricant into the cylinder by gently depressing lever (Item 19) several times in quick succession.



1. This instrument should be kept out of reach of children.
2. Do not leave instrument near any heat source.
3. Setting of instrument dose levels should be carried out in strict accordance with horticultural manufacturer administration instructions.
4. Components in this instrument may be affected by solvents in some commonly used farm chemicals and no responsibility or liability will be accepted by the manufacturer should the instrument be used with any product other than injectable chemicals/pharmaceuticals.
5. Lubricants other than those indicated may damage rubber components in this instrument.



PLEASE ORDER SPARE PARTS BY KIT AND PART NAME

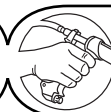
SPARE PARTS AND ACCESSORIES AVAILABLE:

<u>KIT No.</u>	<u>PART NAME</u>
WX1410	Cylinder Service Kit
WX1412	Spear Nozzle

INCLUDES ILLUSTRATION No.

2, 5, 6, 7, 8, 12.
2, 3, 4.

NJ PHILLIPS PTY LTD ABN 36 000 082 002
 ADDRESS: LOCKED BAG 8, GOSFORD, NSW 2250 AUSTRALIA
 TELEPHONE: +61 2 4340 2044 FAX: +61 2 4340 1991
 EMAIL: njp1@njphillips.com.au MADE IN AUSTRALIA



njphillips.com

Our expertise is in your hands.

AS OUR POLICY IS ONE OF CONTINUOUS IMPROVEMENT THE MANUFACTURER RESERVES THE RIGHT TO ALTER THESE SPECIFICATIONS AT ANY TIME. ALL PRODUCTS PRODUCED BY NJ PHILLIPS PTY LIMITED, ARE IDENTIFIED BY A UNIQUE BATCH NUMBER. THIS IDENTIFICATION NUMBER IS AFFIXED TO THE PRODUCT TO ALLOW TRACEABILITY BY THE MANUFACTURER AND MUST NOT BE REMOVED IF PRODUCT INTEGRITY IS TO BE MAINTAINED.

PAM1005 | QL521-R3