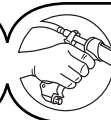


# Ezi-Grip Injector



njphillips.com  
Our expertise is in your hands.



This instrument is designed for the administration of larger volume injectable solutions to livestock. No liability will be accepted by the manufacturer if used for any other purpose. To ensure continued high performance from this instrument, attention to cleanliness is essential. Please read this leaflet prior to use, in particular the **WARNING** statement.

## INSTRUCTIONS FOR USE

1. Check that handpiece is clean and operates freely by depressing lever (item 16) a number of times. If operation sluggish, clean and lubricate.
2. **STERILIZATION BEFORE INJECTING** It is essential that this instrument and a supply of needles be thoroughly sterilized before each use. A common method of sterilization is as follows:
  - a Connect feed tube to handpiece at (item 10).
  - b Wrap cloth around handpiece and place end of feed tube into container of clean hot water and draw hot water into cylinder by depressing lever.
  - c Remove cloth and suspend complete instrument by fully immersing in a container of water and boil together with the needles for at least 10 to 20 minutes.
  - d Remove instrument and needles from container, wrap cloth around handle and pump dry, remove cloth and dry handpiece.



Suspending the instrument not only makes it easier to remove, but also prevents damage should the container boil dry. Repeated boiling will eventually cause the transparent feed tube to turn cloudy. This is not harmful. Chemical sterilization with antiseptic solutions is sometimes practised and in such instances the recommendations of the chemical manufacturer should be followed. **DO NOT attempt to sterilize by autoclaving.**

3. Connect feed tube to both the handpiece at (item 10) and draw-off system.
4. **TO FIT A NEEDLE**  
Screw the needle (in a clockwise direction) into the thread of the needle nut (item 1). It is not necessary to loosen the needle nut when fitting the needle.

### TO REMOVE A NEEDLE

Unscrew the needle nut (item 1) in an anticlockwise direction which will remove the needle from the cylinder (item 2). Unscrew the needle from the needle nut.

Take care to avoid self injection by the needle when assembled to the handpiece.

5. Prime instrument, **holding vertically with the needle pointed upwards** depress the lever until all air bubbles have been eliminated from the cylinder and a droplet of solution appears at the end of the needle.



**Care must be taken to ensure the liquid does not come into contact with any part of the operators body. Chemicals may cause injury to the operator.**

6. Set the dose by turning the dose adjuster (item 12) until the required dose is shown in the dose window.



**Ensure the lever (item 16) has returned fully to the rear position before adjusting the dose, otherwise you will damage the instrument.**

7. It is important that the chosen injection site be cleaned, ideally by swabbing the skin with surgical or methylated spirit. For subcutaneous injection always inject into loose skin. After injecting, massage the site to disperse the injected solution.

## CARE AND MAINTENANCE OF INSTRUMENT

### 1. CLEANING INSTRUMENT

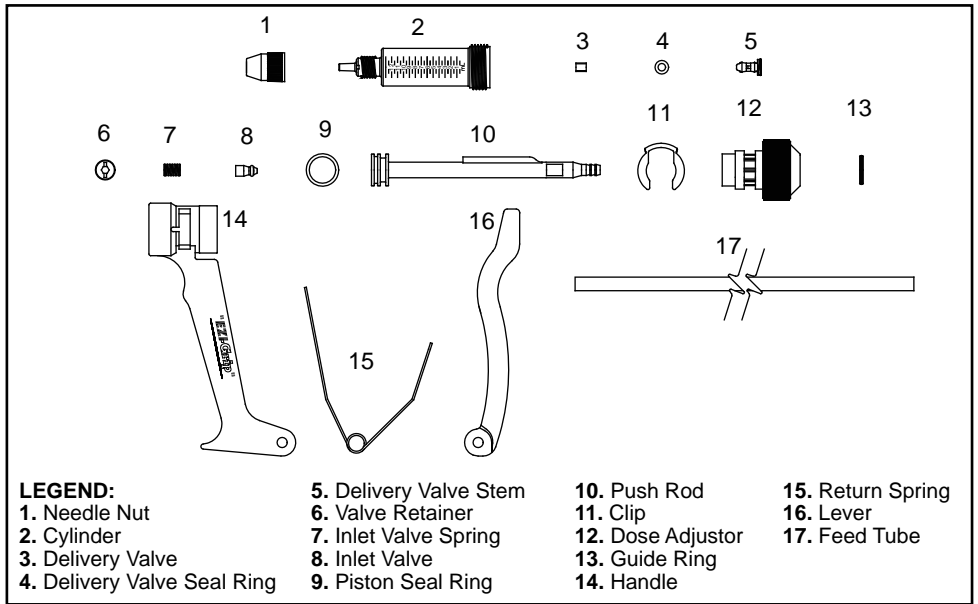
- a Carefully remove and store needles in a safe place or dispose of used needles in a proper manner.
- b Disconnect feed tube from draw-off system and place the end of the feed tube in a clean container with a mix of approximately one litre/quart of warm water and a little detergent.
- c Draw solution through handpiece by depressing lever (Item 16) a number of times until clean.
- d Hand wash exterior of instrument feed tube draw-off connector with soft brush.
- e Rinse by pumping clean water through instrument.
- f Pump dry, remove feed tube from instrument and wipe dry.

## 2. LUBRICATING INSTRUMENT

- a Immerse tapered end of push rod (Item 10) into a small container of NJ Phillips Lubricant.
- b Draw a small quantity of Lubricant into the cylinder by gently depressing lever (Item 16) several times in quick succession.



1. Whilst injecting livestock, appropriate care should be taken to avoid self-injection or needle stick injuries.
2. This instrument should be kept out of reach of children.
3. Do not leave instrument near any heat source.
4. Components in this instrument may be affected by solvents in some commonly used farm chemicals and no responsibility or liability will be accepted by the manufacturer should the instrument be used with any product other than injectable chemicals/pharmaceuticals.
5. Lubricants other than those indicated may damage rubber components in this instrument.



**PLEASE ORDER BY KIT AND PART NAME**

### SPARE PARTS AVAILABLE:

**KIT No.**  
WX1590

**PART NAME**  
Major Service Kit

**INCLUDES ILLUSTRATION No.**  
1, 2, 3, 4, 5, 9

NJ PHILLIPS PTY LTD ABN 36 000 082 002

ADDRESS: LOCKED BAG 8, GOSFORD, NSW 2250 AUSTRALIA

TELEPHONE: +61 2 4340 2044 FAX: +61 2 4340 1991

EMAIL: njp1@njphillips.com.au MADE IN AUSTRALIA



**njphillips.com**

*Our expertise is in your hands.*

AS OUR POLICY IS ONE OF CONTINUOUS IMPROVEMENT THE MANUFACTURER RESERVES THE RIGHT TO ALTER THESE SPECIFICATIONS AT ANY TIME. ALL PRODUCTS PRODUCED BY NJ PHILLIPS PTY LIMITED, ARE IDENTIFIED BY A UNIQUE BATCH NUMBER. THIS IDENTIFICATION NUMBER IS AFFIXED TO THE PRODUCT TO ALLOW TRACEABILITY BY THE MANUFACTURER AND MUST NOT BE REMOVED IF PRODUCT INTEGRITY IS TO BE MAINTAINED.

PAS1008 | QL682