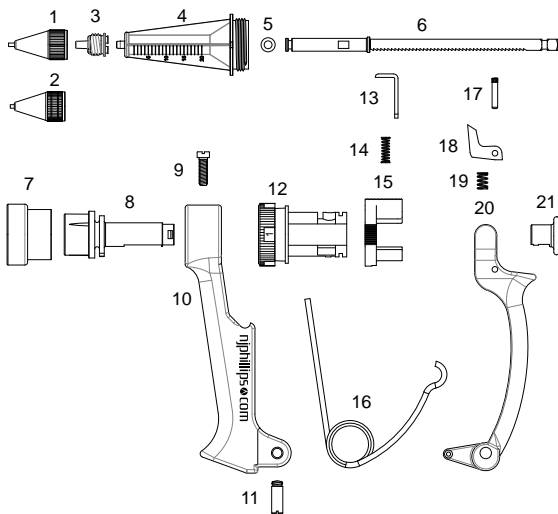




- Robust and highly accurate design.
- Suitable for any antigen or vaccine using 0.1ml dose.
- Easy to clean and service.
- Uses standard 22G x 1/2" Luer-Lock needles.
- Two different needle nuts included for 7mm or 4mm penetration.
- Packed with a spare piston seal ring and cylinder.



PARTS BREAKDOWN



- | | | |
|---------------------------------------|--------------------------------|--|
| 1. Needle Nut 4mm penetration (SN599) | 12. Dose Adjustor (SH1619) | |
| 2. Needle Nut 7mm penetration (SN628) | 13. Ratchet Plate (SH1340) | |
| 3. Needle Mount (SN600) | 14. Ratchet Spring (SP452) | |
| 4. Cylinder (SH1590) | 15. Lock Ring (SH438) | |
| 5. Seal Ring (SP69) | 16. Return Spring (SP1483) | |
| 6. Piston & Pushrod (SN601 & SN602) | 17. Pawl Pivot Pin (RN474) | |
| 7. Cylinder Support (SN246) | 18. Pawl Repeater (SH883) | |
| 8. Pushrod Guide (SH435) | 19. Pawl Return Spring (RP374) | |
| 9. Handle Clamp Screw (SP6/N) | 20. Lever (RA473/J11) | |
| 10. Handle (SA79) | 21. Pushrod Knob (SH1175/G4) | |
| 11. Lever Screw (SN16) | | |

KIT NO.	PART NAME	PART NO.
WX1690	Major Service Kit	3,4,5.
WX1751	Needles 22G x 1/2"	Not illustrated.
WX1712	Red & Blue Knob	24.
SN599	4mm Penetration Nut	1.
SN628	7mm Penetration Nut	2.
WX1510	Lubricant (pack of 2)	See 'Accessories'.

PLEASE ORDER BY KIT AND PART NAME

ACCESSORIES



PACKAGING



MODEL	DOSE RANGE	INCREMENTS
2ml	0.1ml – 2ml	0.1ml



Customise this instrument with your brand colour and logo. Contact us for details.



LOCKED BAG 8, GOSFORD NSW, AUSTRALIA 2250
 P +61 2 4340 2044 F +61 2 4340 1991 | E njp1@njphillips.com.au